

## 2 bedroom Family Home



*The ultimate in affordable living -  
we make your dream home a reality.*

Two bedroom contemporary style family house.

Ground floor kitchen dining area, lounge as one room and visitors wash room.

First floor two bedrooms, space for double beds. family bathroom with bath-in shower.

UPVC double glazed windows, doors and french doors leading to balcony off each bedroom.

House style benefits from been constructed as detached, semi-detached or as a terrace layouts.

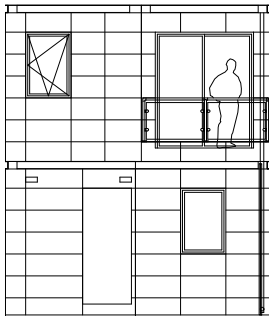
Internal floor finishes consists of laminate flooring kitchen, carpets to the lounge, bedroom and stairs, tile floors to bathroom and washroom. House type has the benefit of standard and contemporary lighting with light fresh painted wall finishing.

83 / 893

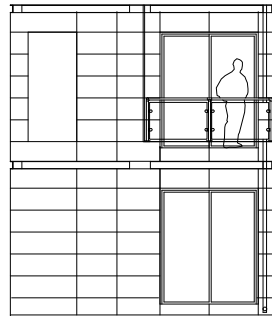
SQ M SQ FT

# The Cube - 2B4P/C

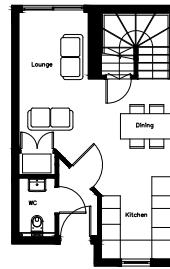
- 2 Bedrooms
- Open plan kitchen/Lounge dining area
- Ground Floor Wash Room
- Kitchen with White Goods
- Contemporary Lighting
- Laminate Flooring
- Family Bathroom
- Wooden Doors
- Tiles
- Double Glaze Windows
- Pitched Roof
- Brick Slips/ Render / Cladding



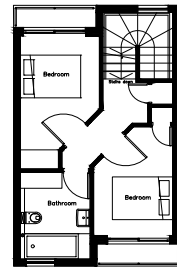
Front elevation



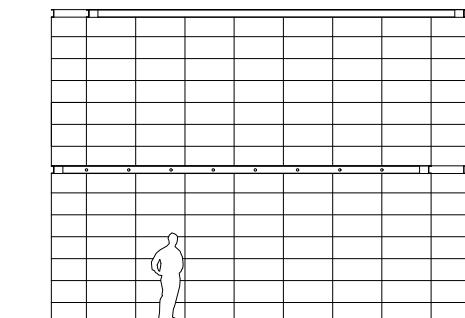
Rare elevation



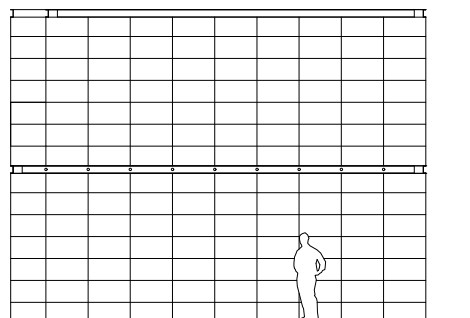
Ground floor



First floor



Side elevation



Side elevation

Ex-Factory Price £ ???? Please note delivery & installation and on site works to be price separately once the site has been identified

